

# CLIMATOLOGY

SABREENA SHAIKH  
IV SEM B. ARCH  
2BV14AT039  
BVB CET

MINOR - 1

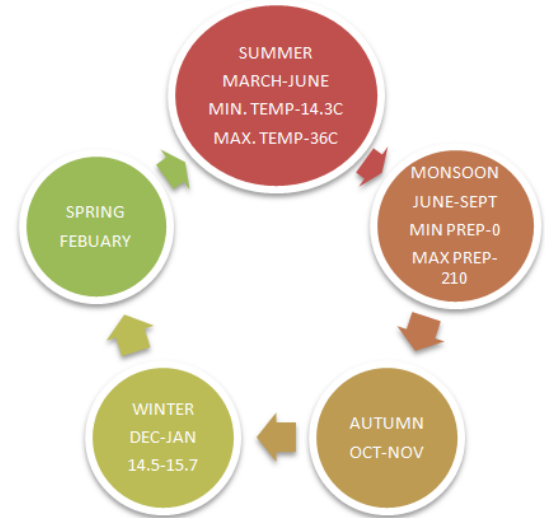
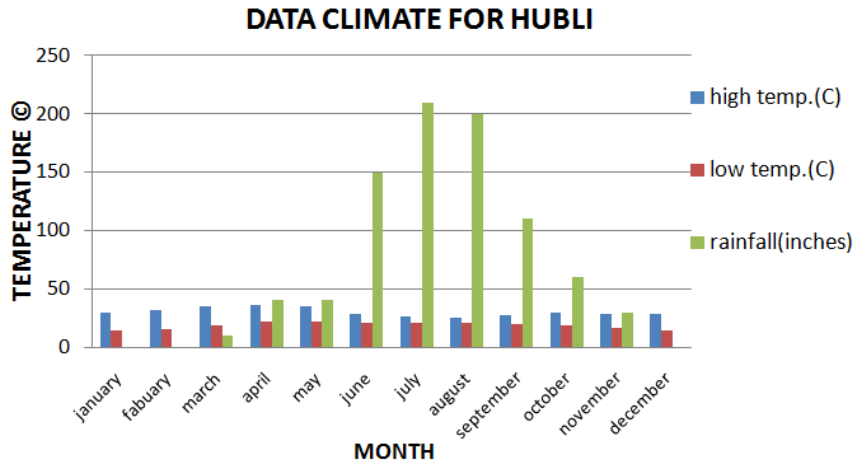
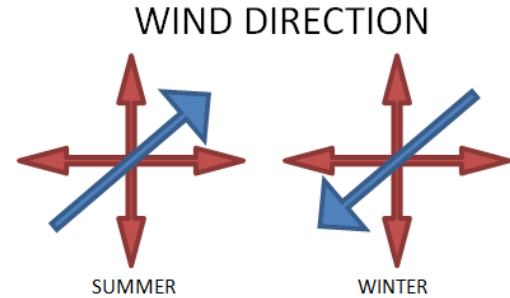
# HUBLI

Hubli officially known as Hubballi is the second largest city in Karnataka. It is one of the fastest growing agglomerating city in the state of Karnataka, India. The name Hubballi literally means "Flowering creeper" in Kannada. The twin cities of Hubli and Dharwad, collectively referred to as "Hubli-Dharwad", is the largest city in Karnataka after Bengaluru. While Dharwad is the administrative headquarters, the city of Hubli, situated about 20 km south-east of Dharwad, is the commercial center and business hub of North Karnataka region. Crops including cotton, chilly and peanuts are grown aplenty in the surrounding rural agricultural areas, and Hubli is a major trading centre for these commodities. It is also an important city for the Indian Railways, as it is the headquarters for South Western Railway Zone and the Hubli Railway Division. Hubli is a major railway junction in North Karnataka. It is also the headquarters of North Western Karnataka Road Transport Corporation. Hubli also houses the largest number of government offices outside Bangalore.



# CLIMATE – HUBLI, KARNATAKA

Hubli - Dharward has a Tropical wet and dry climate. Summers are hot and dry, lasting from late February to early June. They are followed by the monsoon season, with moderate temperatures and a large amount of precipitation. Temperatures are fairly moderate from late October to early February, with virtually no rainfall. Hubli is 640 meters above M.S.L. The average yearly rainfall is 838 mm



# LOCATION MACRO LEVEL



PROPOSED HOUSING FOR SAPTAGIRI DEVELOPERS AT UNKAL HUBLI

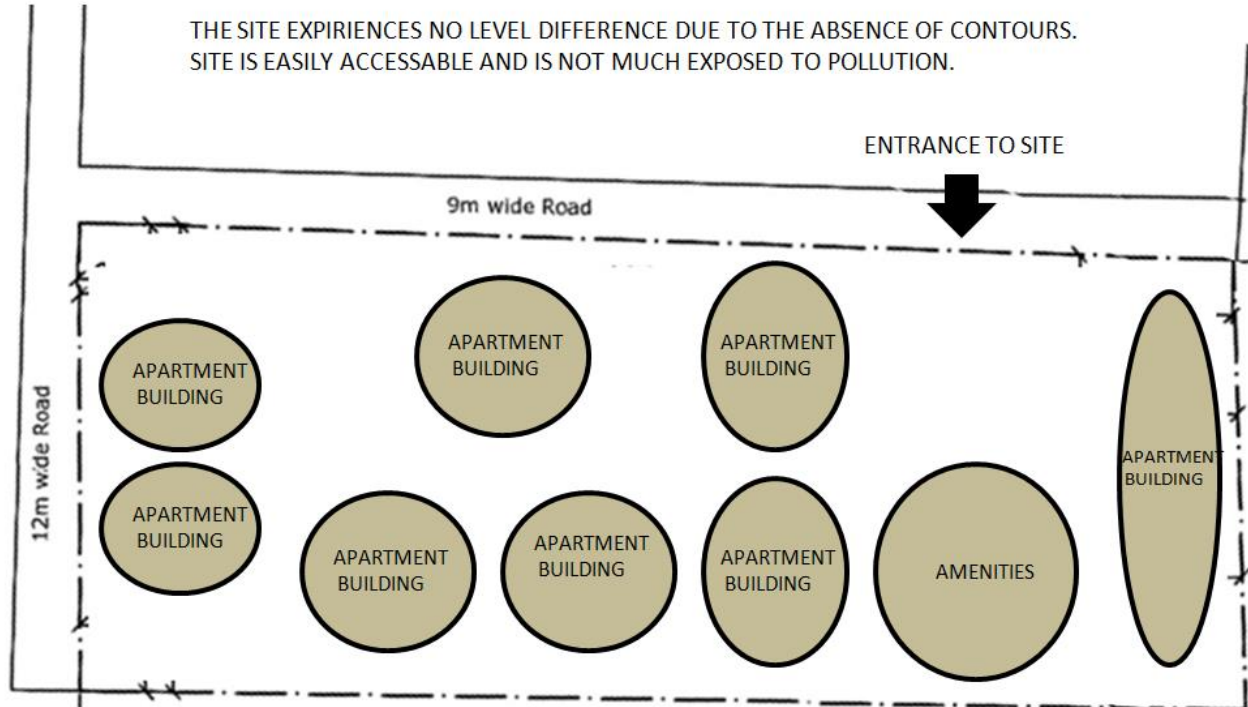
SABREENA SHAIKH  
2BV14AT039

Proposed site  
Total Site Area – 14296 Sqm (Approx 3.5 Acres)

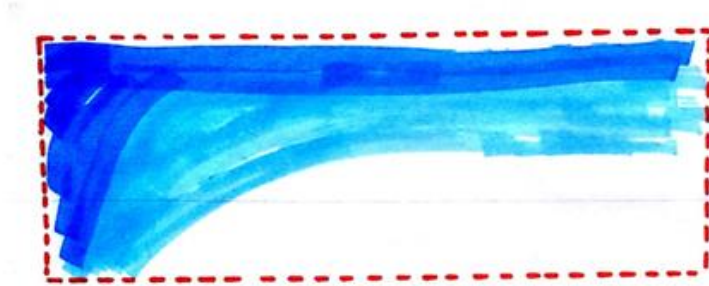


# SITE ZONING

THE SITE EXPERIENCES NO LEVEL DIFFERENCE DUE TO THE ABSENCE OF CONTOURS.  
SITE IS EASILY ACCESSIBLE AND IS NOT MUCH EXPOSED TO POLLUTION.



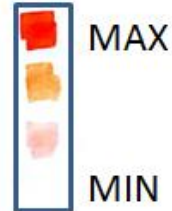
# POLLUTION ON SITE



AIR POLLUTION



NOISE POLLUTION

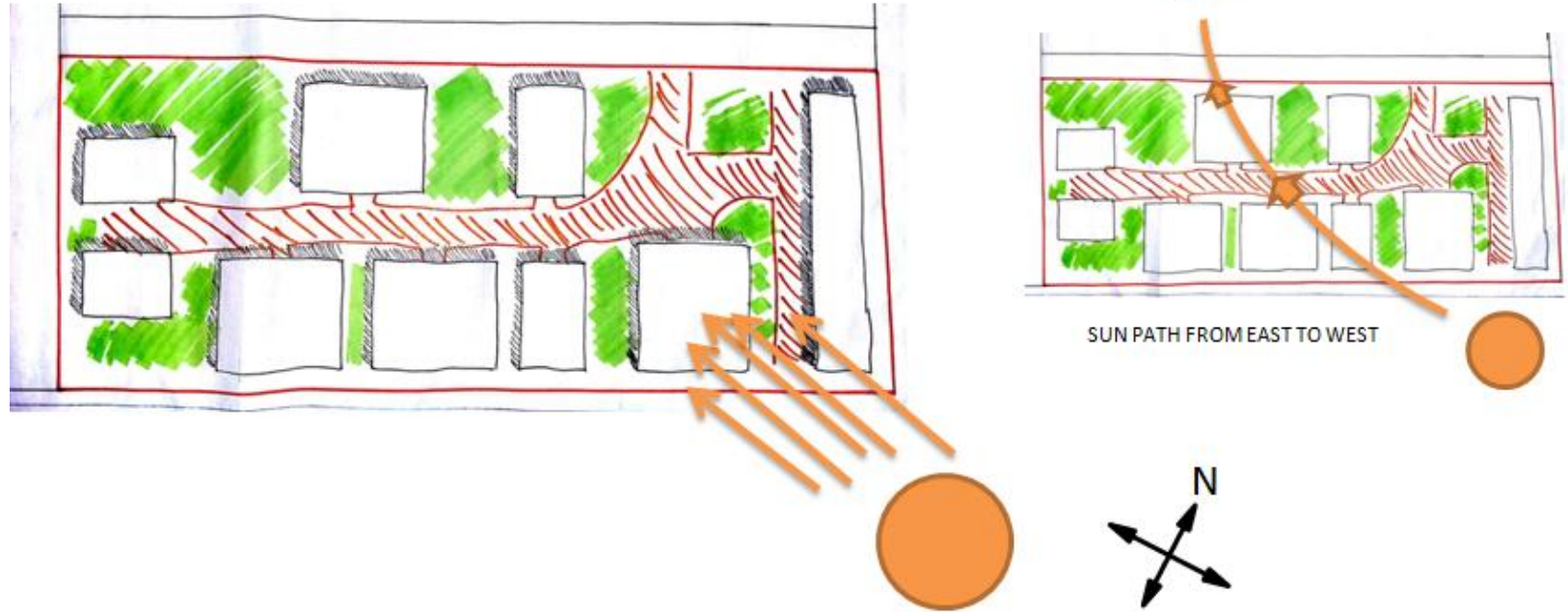


NORTH-WEST SIDE OF THE SITE EXPERIENCES MORE NOISE AND AIR POLLUTION DUE TO THE PRESENCE OF THE CONNECTING ROAD AND RESIDENTIAL PLOTS



# SUN PATH

SUN RISING FROM EAST PRODUCES FOLLOWING SHADOW CAST ON SITE.



# WIND DIRECTION

THE SITE WILL EXPERIENCE MODERATE RAINFALL WITH THE SOUTH-WEST WINDS,  
AND LIGHT RAINFALL FROM THE NORTH-EAST WINDS.






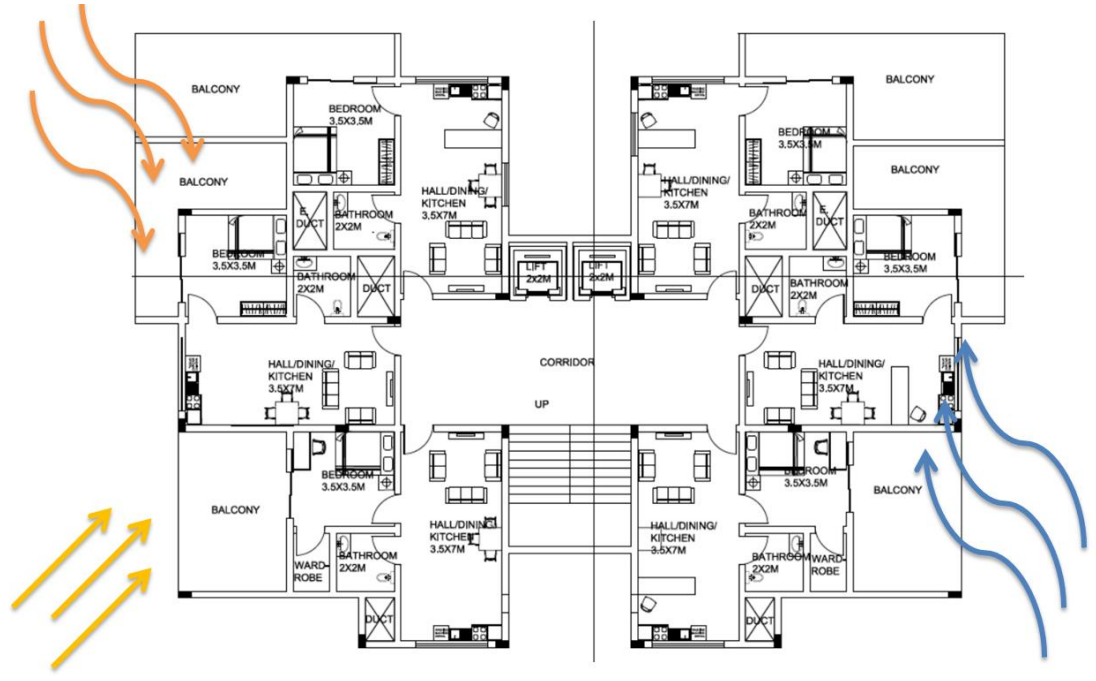
MINOR - 2

# MASTER PLAN

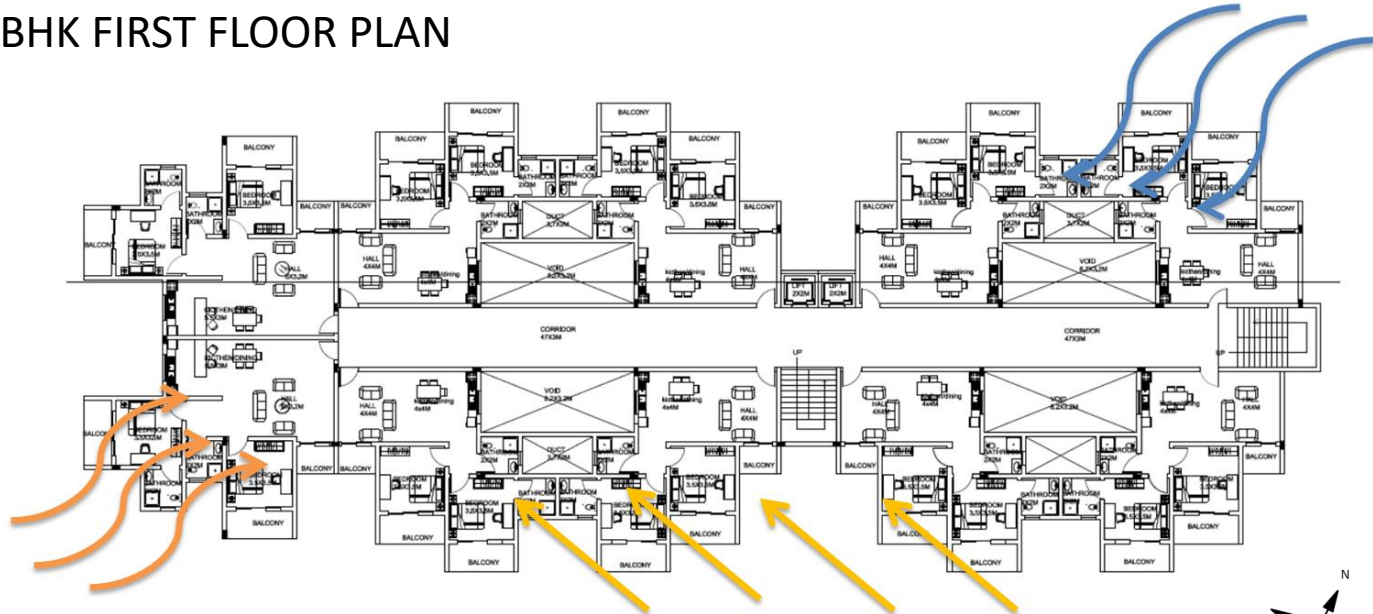





# 1 BHK FIRST FLOOR PLAN

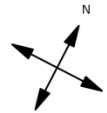
-  SUNPATH RISING FROM EAST
-  WINTER MONSOON WIND FROM NORTH-EAST
-  SUMMER MONSOON WINDS FROM SOUTH-WEST






## 2 BHK FIRST FLOOR PLAN

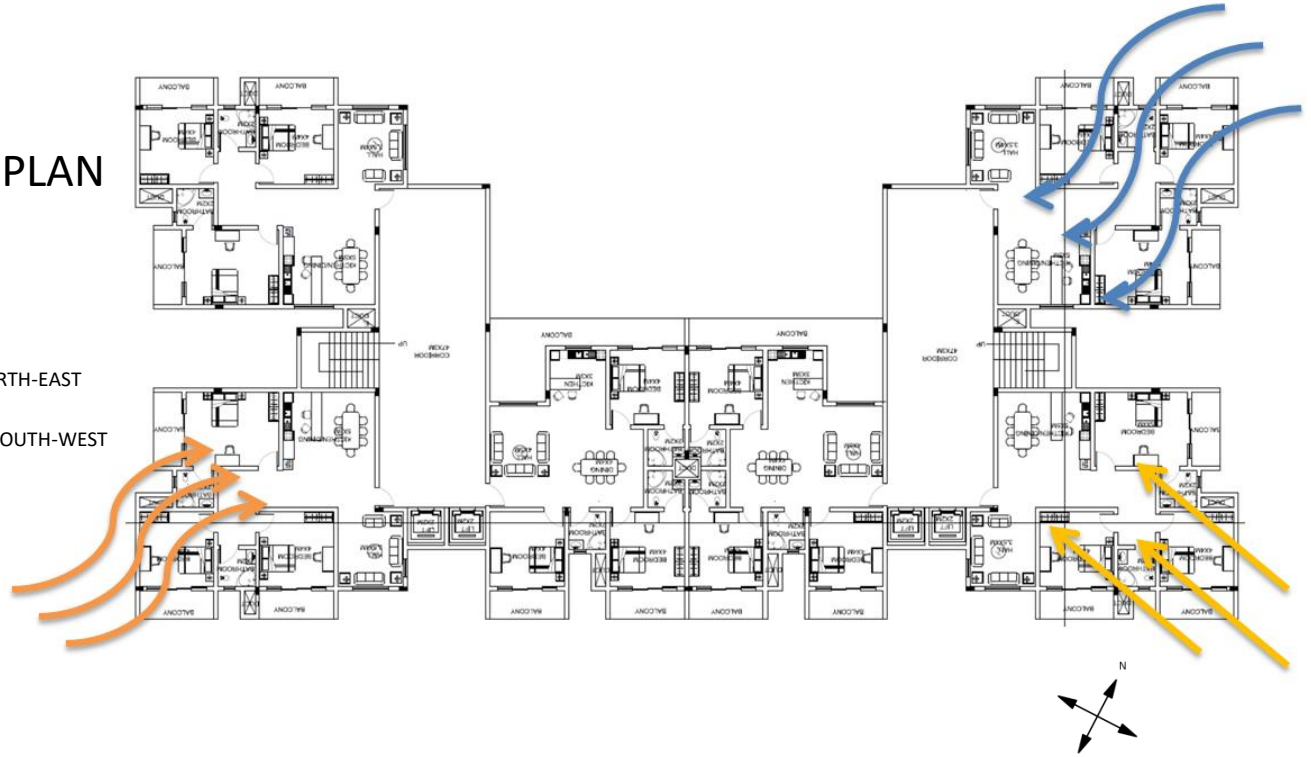


-  SUNPATH RISING FROM EAST
-  WINTER MONSOON WIND FROM NORTH-EAST
-  SUMMER MONSOON WINDS FROM SOUTH-WEST






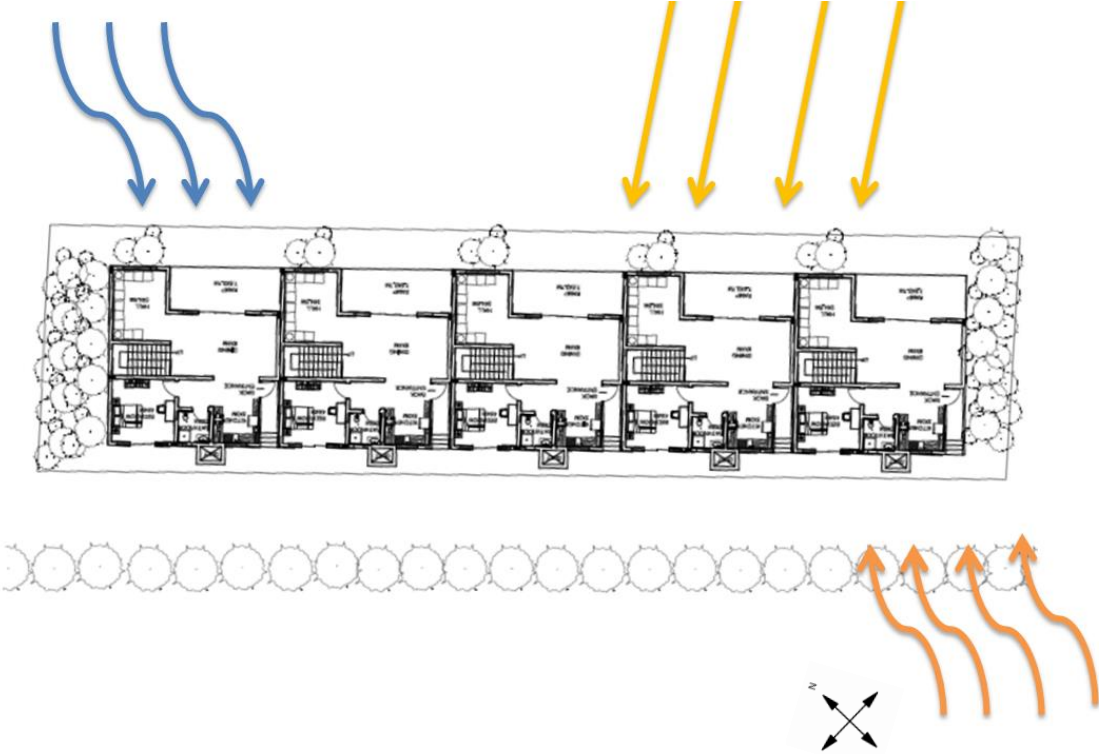
# 3 BHK FIRST FLOOR PLAN

-  SUNPATH RISING FROM EAST
-  WINTER MONSOON WIND FROM NORTH-EAST
-  SUMMER MONSOON WINDS FROM SOUTH-WEST



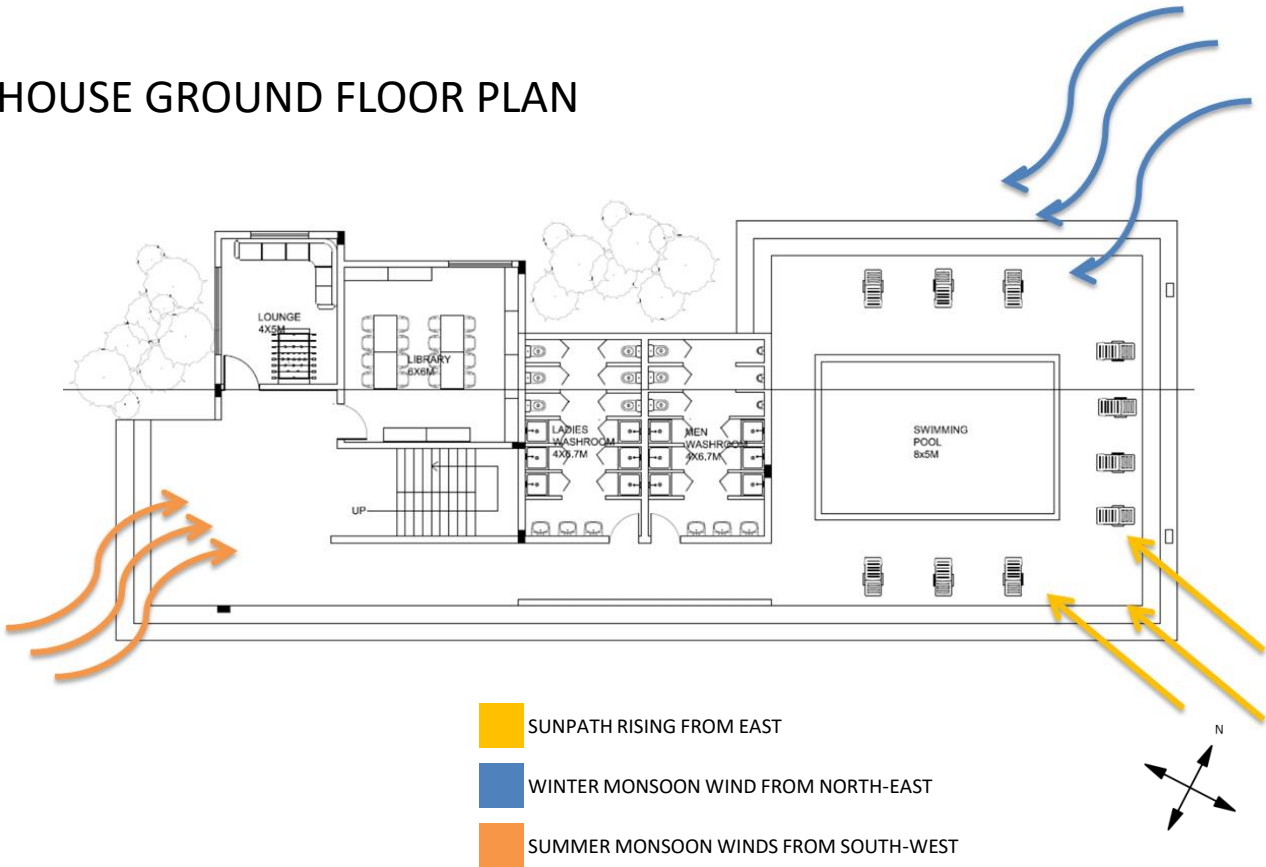
# ROW HOUSE VILLA GROUND FLOOR PLAN

-  SUNPATH RISING FROM EAST
-  WINTER MONSOON WIND FROM NORTH-EAST
-  SUMMER MONSOON WINDS FROM SOUTH-WEST





# CLUB HOUSE GROUND FLOOR PLAN



THANK YOU